

# SIGNS OF A STROKE: BE FAST

A Quick Stroke Assessment

# BEFAST



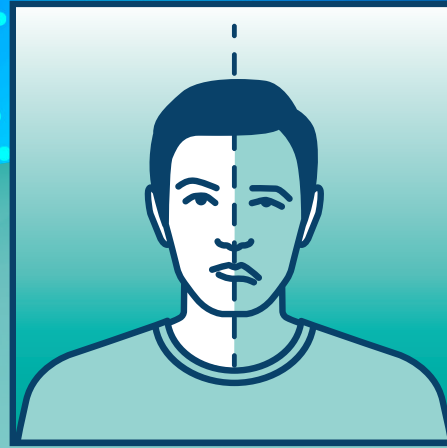
## BALANCE:

Loss of  
Balance,  
Dizziness



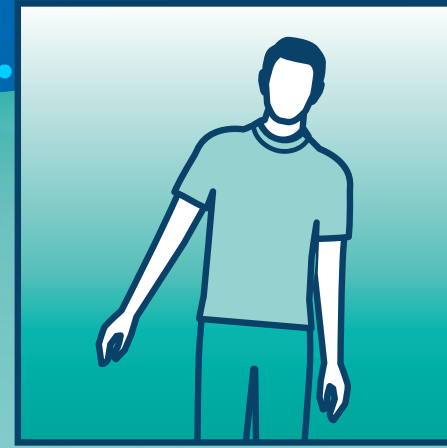
## EYES:

Double/Blurred  
Vision or Loss  
of Vision



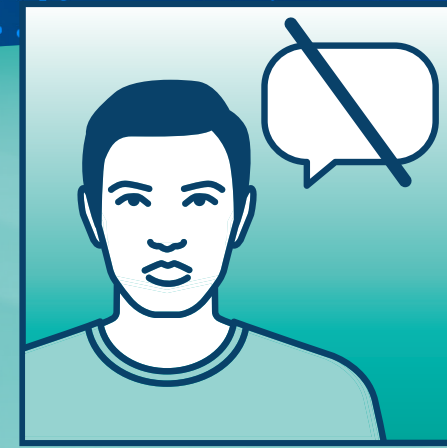
## FACE:

Uneven Face/  
Drooping



## ARMS:

Weakness,  
Numbness



## SPEECH:

Slurred Speech  
or Difficulty  
Speaking



## TIME:

Time is  
Important!  
Call 9-1-1

## SPOT THE WARNING SIGNS OF A STROKE DON'T HESITATE – CALL 9-1-1



WESTERN  
RESERVE  
HOSPITAL

Proudly Physician Owned



Partnering with

University Hospitals

(330) 971-7000 • [westernreservehospital.org](http://westernreservehospital.org)

