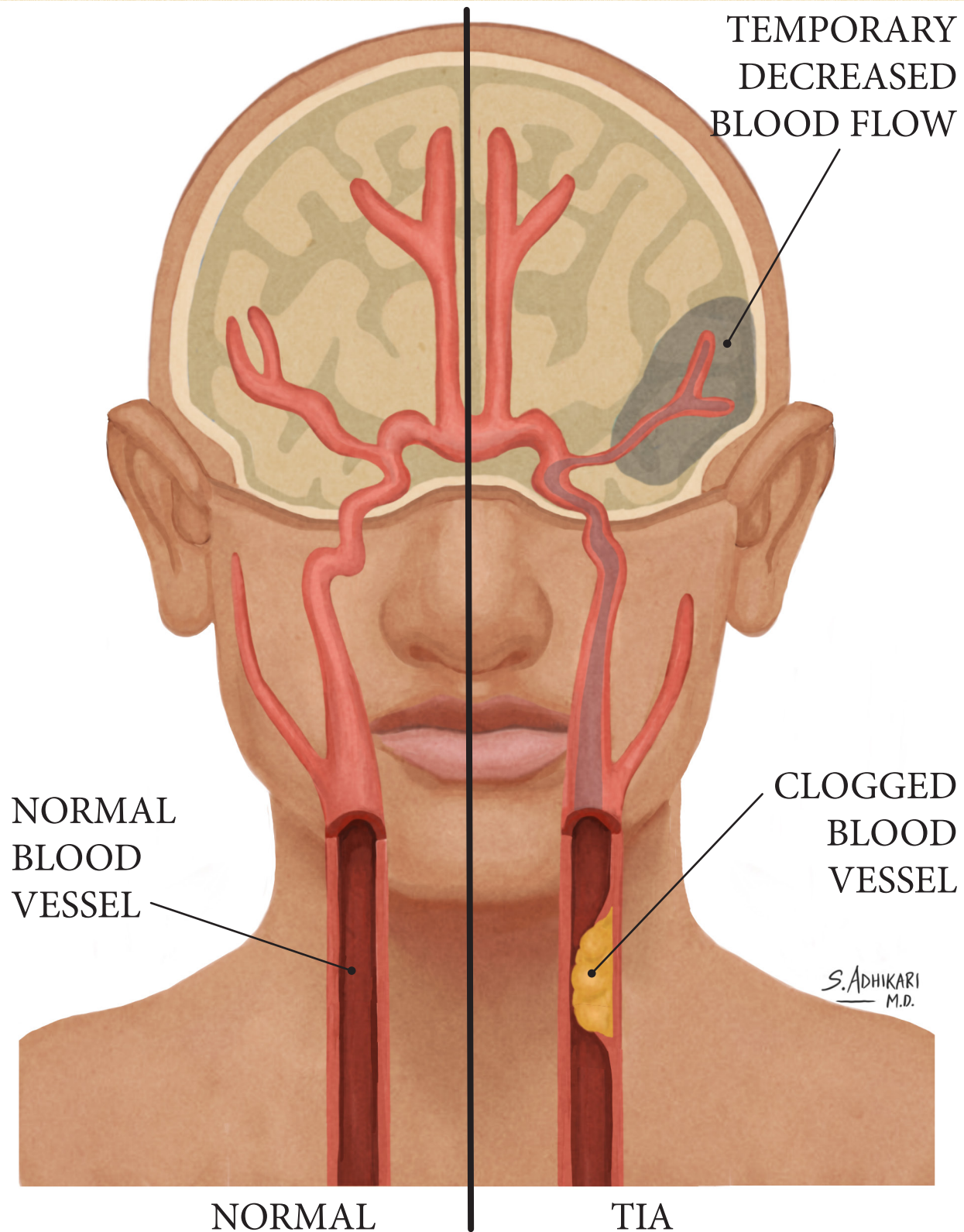


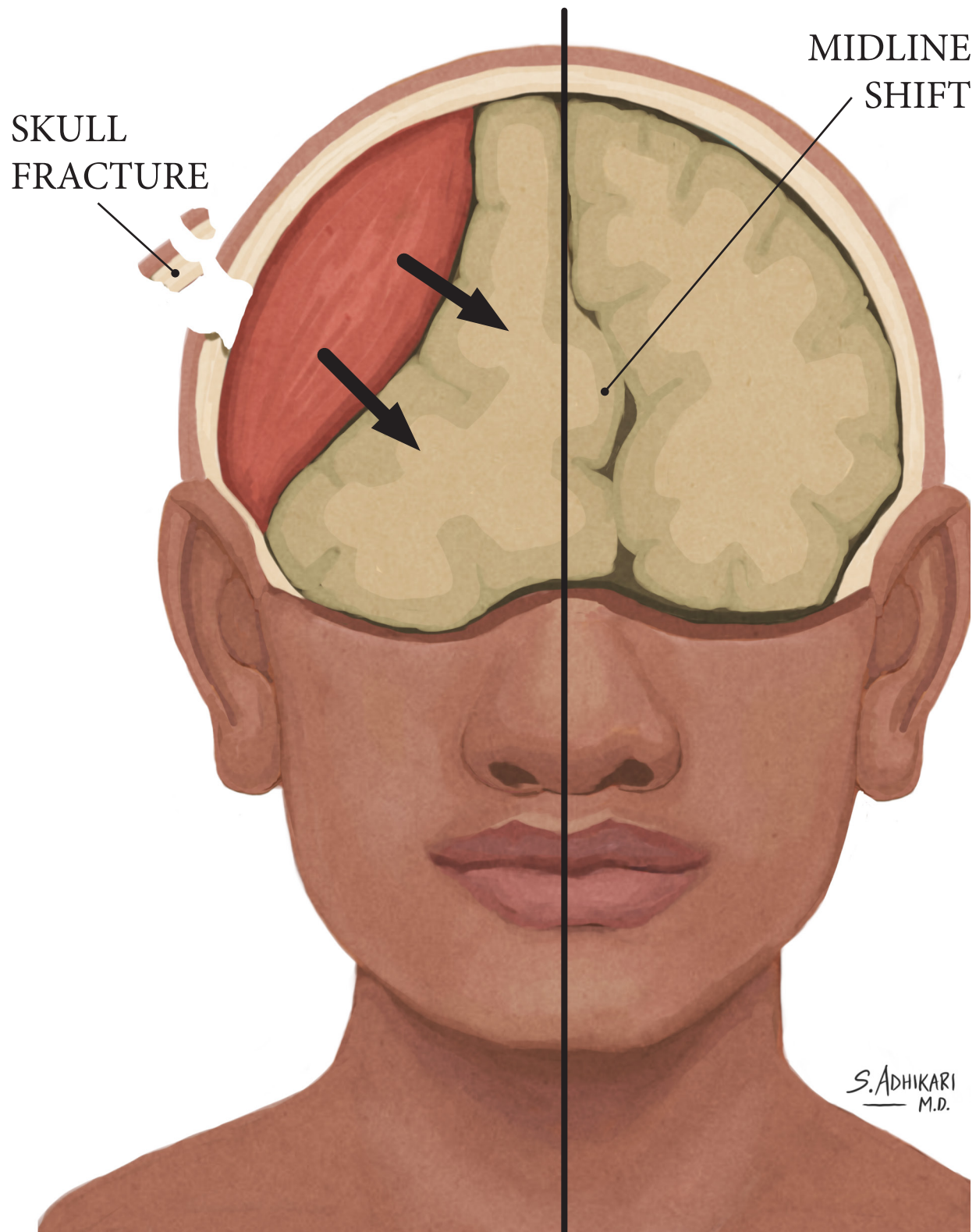
MINI-STROKE

TRANSIENT ISCHEMIC ATTACK (TIA)



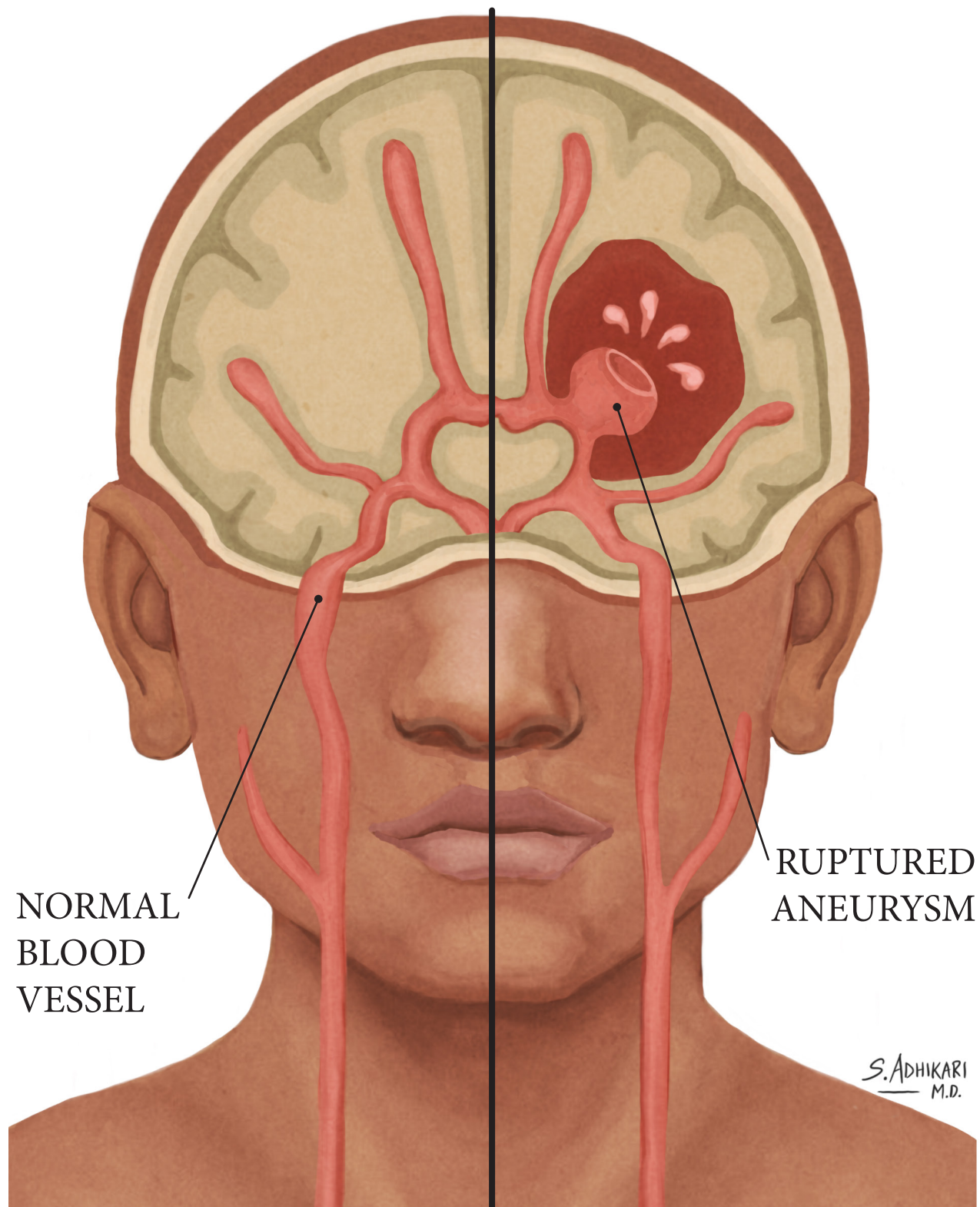
BRAIN BLEED

INTRACRANIAL HEMORRHAGE (ICH)

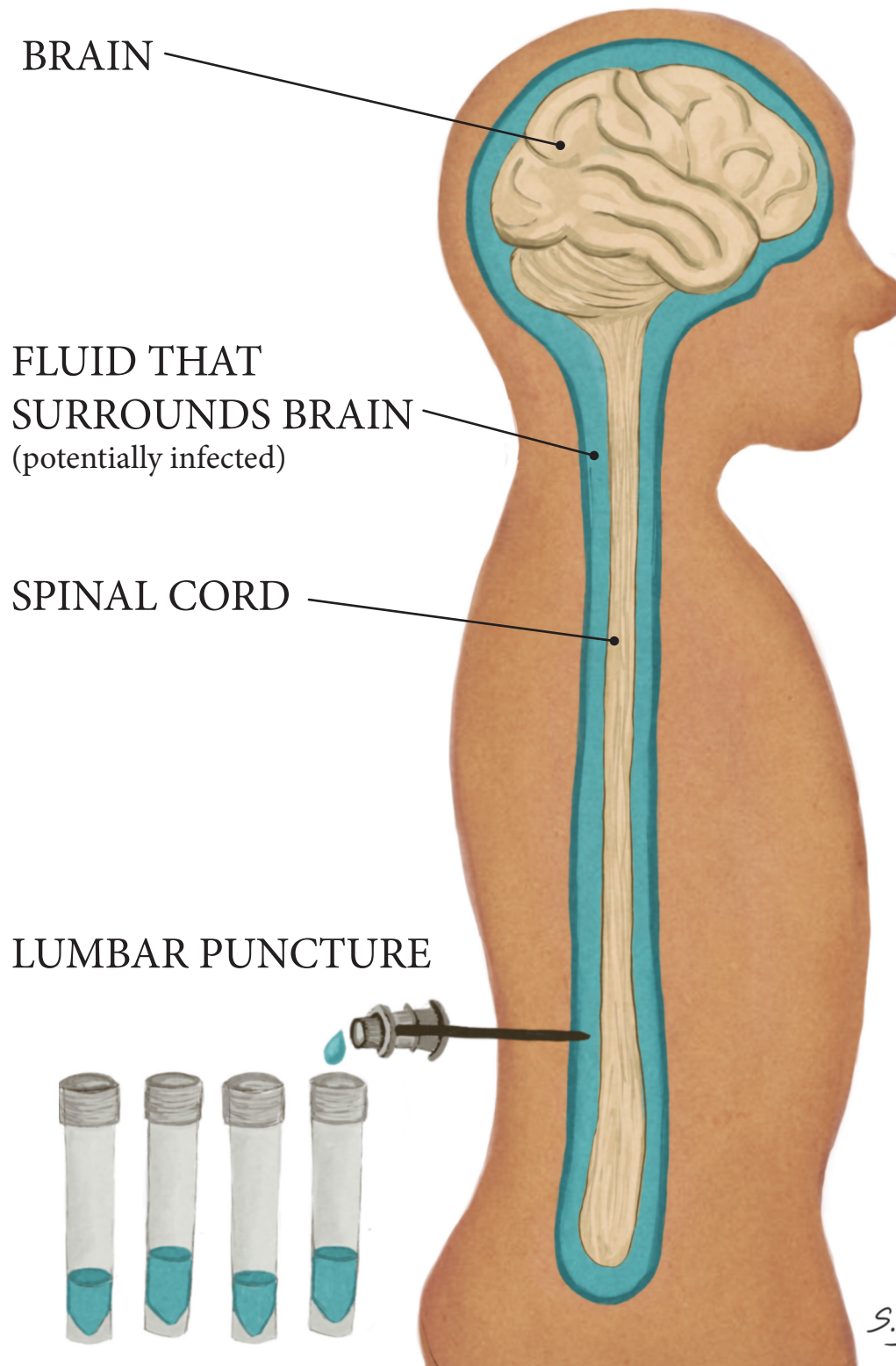


BRAIN ANEURYSM

SUBARACHNOID HEMORRHAGE (SAH)



MENINGITIS



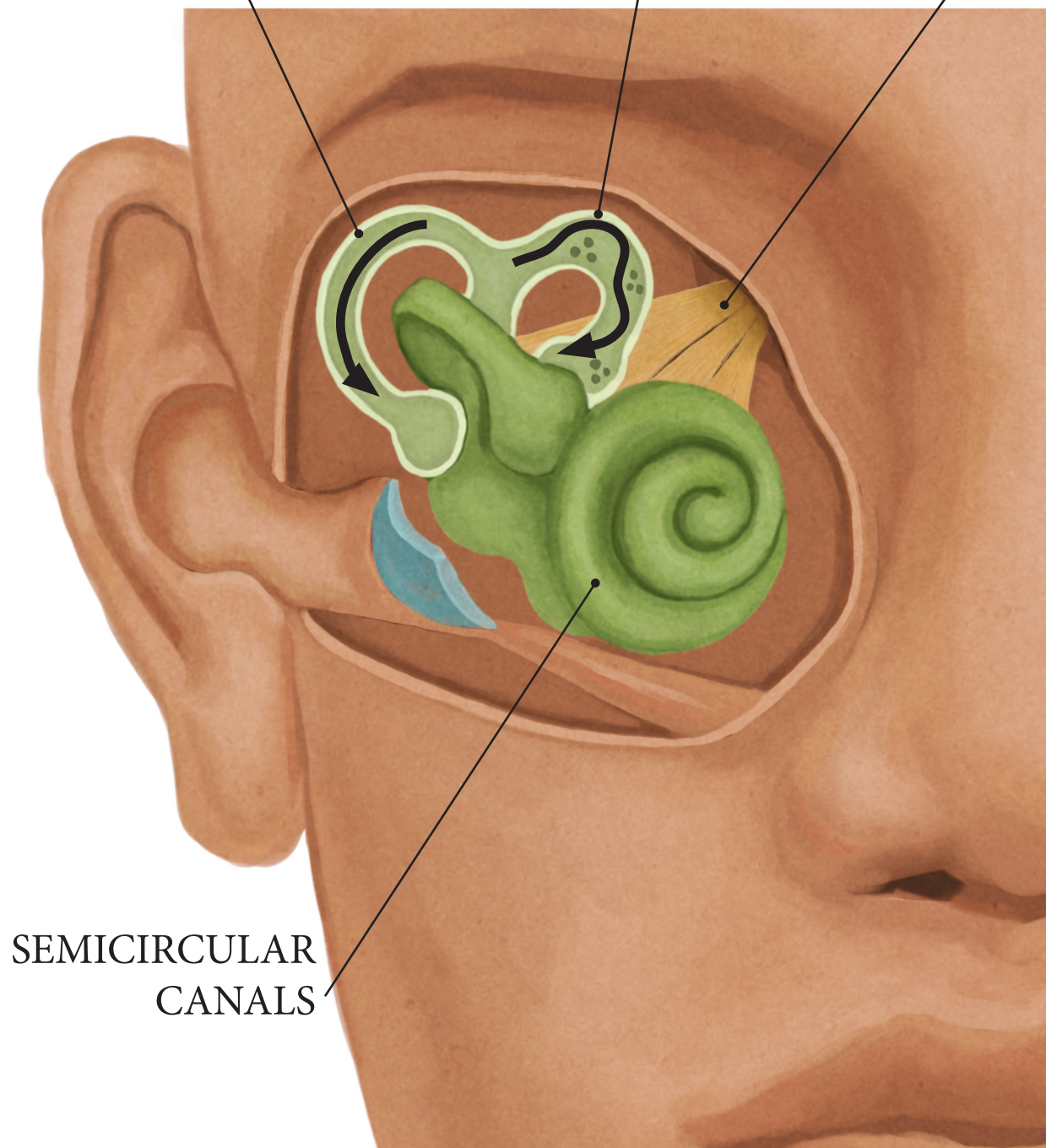
DIZZINESS

BENIGN POSITIONAL VERTIGO (BPV)

NORMAL FLOW

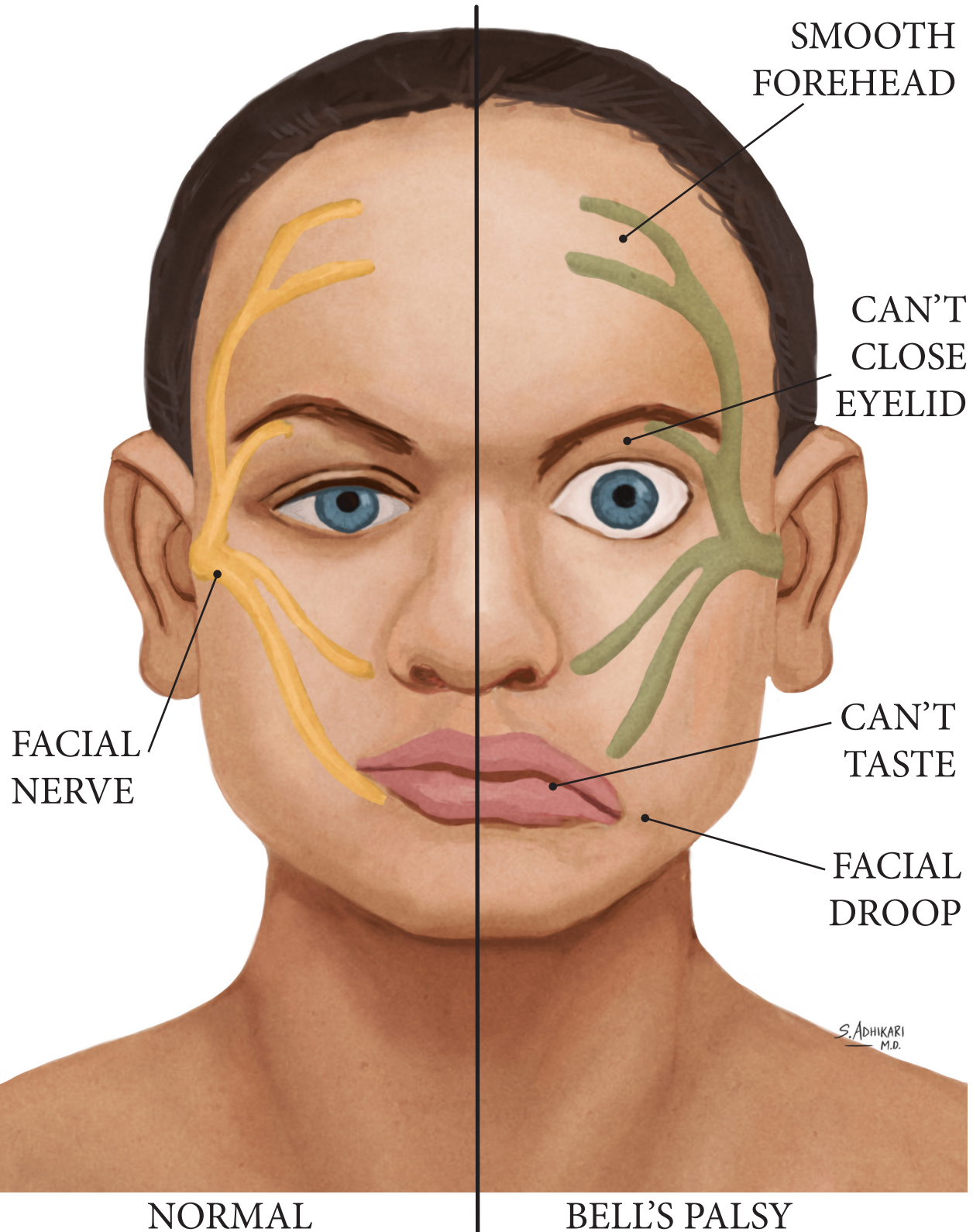
BUMPY FLOW

NERVE

SEMICIRCULAR
CANALSS. ADHIKARI
M.D.

BELL'S PALSY

7th CRANIAL NERVE PALSY



CONCUSSION

CLOSED HEAD INJURY

BRAIN SITS
IN FLUID

